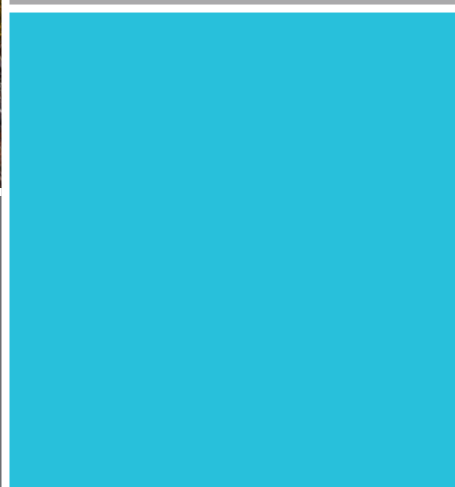
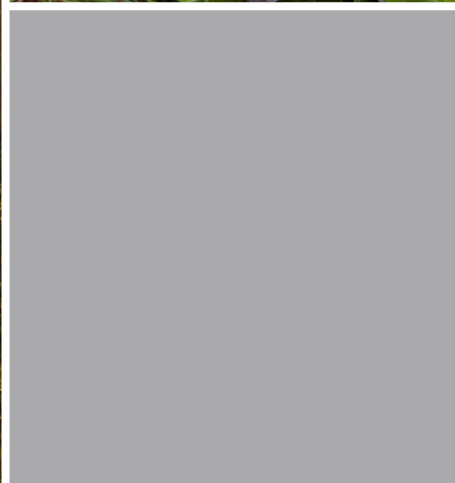


SecureGain 3 Annuity

A fixed annuity from Great American Life Insurance Company®




GREATAMERICAN
LIFE INSURANCE CO.
a MassMutual company

Uncomplicate Retirement®

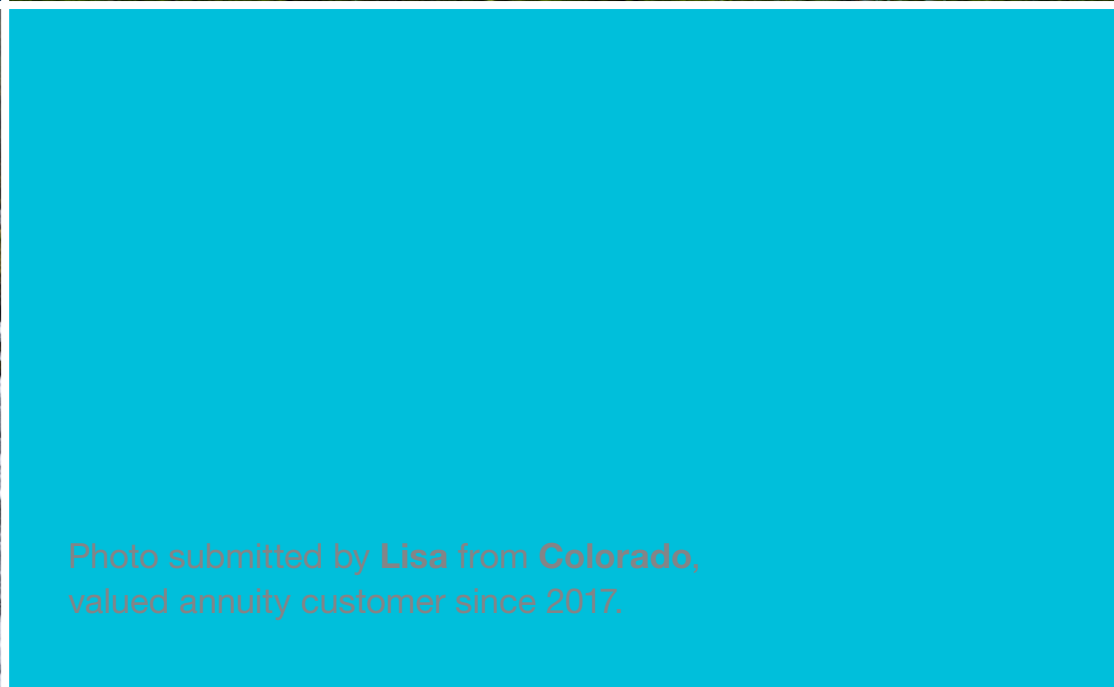


Photo submitted by **Lisa** from **Colorado**,
valued annuity customer since 2017.

Simplify Your Path To Financial Security

The SecureGainSM 3 fixed annuity offers:



Predictable growth

To help build your retirement savings, your annuity's interest rate is guaranteed over two three-year periods. No matter how the market performs, the value of your annuity will grow at a steady rate during these periods.



Safety of principal

Regardless of market conditions, you won't lose the money you contribute to your annuity unless you take a withdrawal or surrender your contract during its early withdrawal charge period.



Guaranteed retirement income

When you're ready to turn the money you've accumulated in your annuity into retirement income, you can select from a variety of payout options, including an income stream that will last for the rest of your life.



Annuity Basics

Simply put, an annuity is a contract between you and an insurance company. It is a long-term financial vehicle that's designed to protect and grow your money, and then provide a stream of income during your retirement. In fact, other than pensions, **annuities are the only products that provide guaranteed lifetime income.**

Great American Life® is committed to offering annuities that are simpler and easier to understand – helping to achieve your goals with no surprises.

How Your Money Grows

To help build your retirement savings, the SecureGainSM 3 annuity offers interest rates that are guaranteed for three-year periods. Each three-year period is called a term. The product has two terms.

How it works

When you purchase your annuity, the initial interest rate is guaranteed for the first term. Near the end of contract year three, we will set a new interest rate for the second term. The new interest rate may be higher or lower than the interest rate in years one through three, but it will never be lower than your annuity's guaranteed minimum interest rate. Your annuity's guaranteed minimum interest rate will be set out on your contract specifications page. It will be 1% or higher.

Hypothetical example



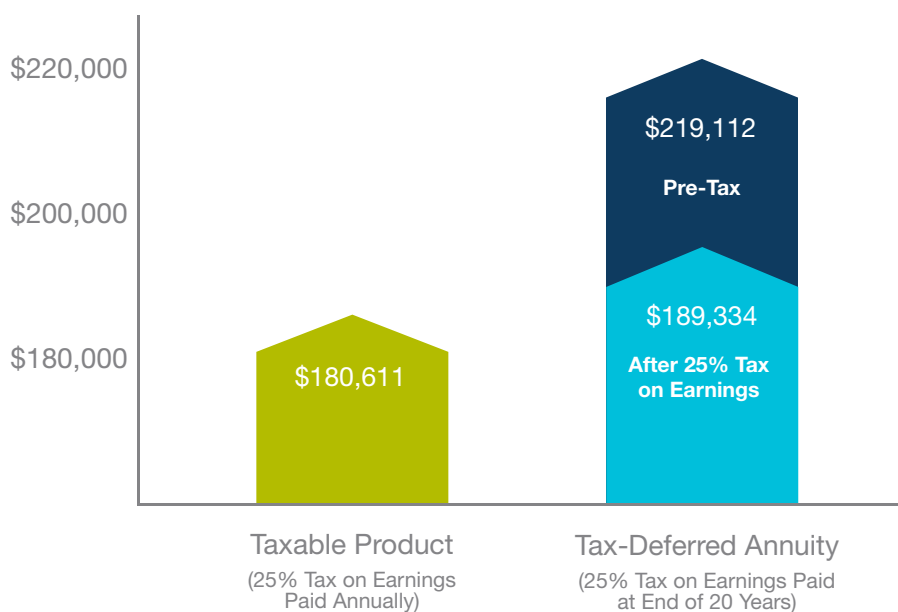
Before the second term begins, you will receive a letter with your new interest rate. At this time, you can choose to surrender your annuity without incurring an early withdrawal charge or market value adjustment, or start a second term. It's as simple as that.

After the second term, the interest rate we set for this annuity may vary, but it will never be lower than the guaranteed minimum interest rate.

What Is The Benefit Of Tax-Deferred Growth?

One of the benefits of an annuity is the opportunity for your money to grow tax deferred. This means no taxes are paid until you take a withdrawal, so your money can grow at a faster rate than it would in a taxable product.

The following chart shows how a purchase payment of \$100,000 grows in a tax-deferred annuity compared to a taxable product over the course of 20 years.



After paying a 25% tax on its earnings, the tax-deferred annuity outgrew the taxable product by more than \$8,000.

This graph assumes the taxable product and the tax-deferred annuity grow at an annual rate of 4%. This is a hypothetical scenario for illustration purposes only, and does not reflect interest rates of any specific fixed annuity offered by Great American Life.

For the taxable product, the graph also assumes the amount needed to pay taxes is deducted annually and no other withdrawals are taken during the 20-year period. For the tax-deferred annuity, it assumes no withdrawals are taken during the 20-year period.

Lower capital gains and dividend tax rates would make the taxable investment more favorable than the rate illustrated and reduce the difference in performance between these accounts. Consider your current and anticipated tax brackets in making your decision, as they may also impact comparison results.

This information is not intended or written to be used as legal or tax advice. It was written solely to provide general information and support the sale of annuity products. You should seek advice on legal or tax questions based on your particular circumstances from an attorney or tax advisor.

The graph compares a \$100,000 taxable investment to a \$100,000 tax-deferred investment, such as a non-qualified annuity. Certain qualified investments, such as a traditional IRA, offer an upfront tax deduction or exclusion for contributions. Other qualified investments, such as a Roth IRA, offer a tax exclusion for earnings. The value of these additional benefits is not illustrated.

For contracts that offer an upfront tax deduction or exclusion, the full amount withdrawn is generally subject to income tax. For a non-qualified annuity, only the gains are subject to income tax. If you are under age 59½, the taxable amount withdrawn from a qualified or non-qualified annuity is generally subject to a 10% federal penalty tax.

Additional Benefits



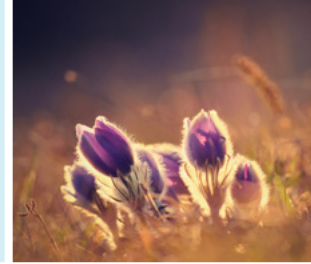
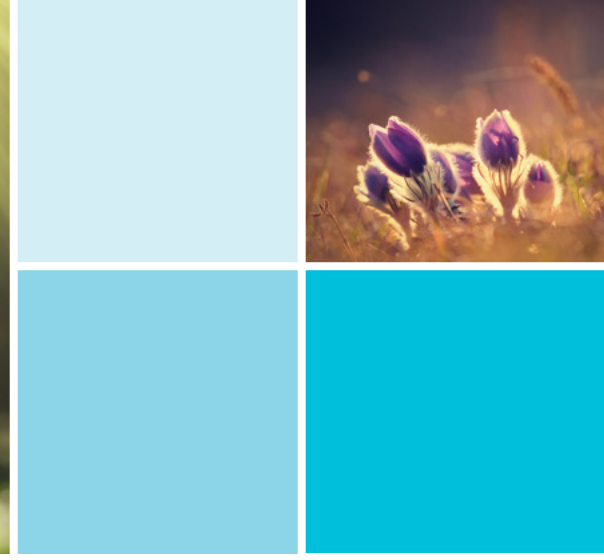
Guaranteed retirement income

With life expectancies on the rise, you may worry about outliving your savings. The SecureGainSM 3 annuity provides the opportunity to turn the money you've accumulated in your annuity into a steady stream of retirement income. Depending on which payout option you choose, income benefit payments are made for a specific number of years or for life.



Protection for your loved ones

No one likes to think about it, but part of achieving peace of mind is knowing what would happen to your money if you pass away unexpectedly. With the SecureGain 3 annuity, any death benefit is paid directly to your beneficiaries, which allows them to receive your financial legacy without the cost and delays of probate.



Consider Your Liquidity Needs

The SecureGainSM 3 annuity is intended to be a long-term product. However, you will have access to a portion of your money each year with penalty-free withdrawals.

During the first contract year, you may withdraw up to 10% of your purchase payment. After the first contract year, 10% of the account value on the most recent contract anniversary may be withdrawn.

It's important to note withdrawals in excess of this amount may be subject to **early withdrawal charges** and a **market value adjustment**. Early withdrawal charges and market value adjustments end after six years.

Remember, if you choose to walk away from your annuity at the end of the first three-year term, we will waive early withdrawal charges and market value adjustments.

Great American Life. It Pays To Keep Things Simple.®

Why choose Great American Life?

As a leading provider of annuities, Great American Life Insurance Company is committed to helping people plan for a secure retirement. We offer a level of financial strength that our customers can count on. We are a wholly owned subsidiary of MassMutual, one of the largest life insurance companies in the U.S., founded in 1851.

Our simple promise

When it comes to planning for your future, we believe it pays to keep things simple. From the products we offer to the service we provide, we make things as easy as possible. Whenever you have a question, we're only a phone call away. It's part of our simple promise to you: superior service and annuities that are easier to understand.

Our simple promise to you: superior service and annuities that are easier to understand.

*Cincinnati, Ohio: Home of Great American
Life Insurance Company*



Product Features

Issue ages	<p>Qualified: 0–89 Non-qualified: 0–89 Inherited IRA: 0–75 Inherited non-qualified: 0–75</p>																
Purchase payment	<p>You can purchase this annuity with a single purchase payment of \$10,000 or more.</p>																
Fees	<p>There are no upfront charges. All your money goes to work for you.</p>																
Terms	<p>This product has two three-year terms.</p>																
Interest rates	<p>Interest rates are guaranteed during a term. The initial interest rate is guaranteed for the first three contract years. Near the end of the third contract year, a new interest rate is set. That new interest rate is guaranteed until the end of the sixth contract year.</p> <p>After the end of the second term, we will set the interest rate from time to time at our discretion. Interest rates will never be lower than the guaranteed minimum rate.</p>																
Penalty-free withdrawals	<p>During the first contract year, you may withdraw up to 10% of your purchase payment. After the first contract year, 10% of the account value on the most recent contract anniversary may be withdrawn. Amounts withdrawn in excess of the penalty-free withdrawal allowance may be subject to early withdrawal charges and a market value adjustment.</p> <p>If you choose to surrender your annuity at the end of the first term, early withdrawal charges and market value adjustments will not apply.</p>																
Early withdrawal charges	<p>During the first six contract years, an early withdrawal charge starting at 9% is applied to surrenders and withdrawals that exceed the 10% penalty-free amount (except surrenders at the end of the first three-year term). All charges end after six years.</p>																
	<table border="1"> <thead> <tr> <th data-bbox="472 1766 797 1801">Contract year</th> <th data-bbox="797 1766 846 1801">1</th> <th data-bbox="846 1766 894 1801">2</th> <th data-bbox="894 1766 943 1801">3</th> <th data-bbox="943 1766 992 1801">4</th> <th data-bbox="992 1766 1040 1801">5</th> <th data-bbox="1040 1766 1089 1801">6</th> <th data-bbox="1089 1766 1349 1801">7+</th> </tr> </thead> <tbody> <tr> <td data-bbox="472 1801 797 1837">Early withdrawal charge</td> <td data-bbox="797 1801 846 1837">9%</td> <td data-bbox="846 1801 894 1837">8%</td> <td data-bbox="894 1801 943 1837">7%</td> <td data-bbox="943 1801 992 1837">6%</td> <td data-bbox="992 1801 1040 1837">5%</td> <td data-bbox="1040 1801 1089 1837">4%</td> <td data-bbox="1089 1801 1349 1837">0%</td> </tr> </tbody> </table>	Contract year	1	2	3	4	5	6	7+	Early withdrawal charge	9%	8%	7%	6%	5%	4%	0%
Contract year	1	2	3	4	5	6	7+										
Early withdrawal charge	9%	8%	7%	6%	5%	4%	0%										

<p>Market value adjustment</p>	<p>A market value adjustment (MVA) will apply if you surrender your contract during the first six years or take a withdrawal that exceeds the 10% free-withdrawal allowance (except surrenders at the end of the first three-year term).</p> <p>The MVA is calculated by comparing the interest rate environment when you purchase your contract to the environment when you choose to surrender your contract. This can result in an increase to your surrender value during a period of decreasing rates, or a decrease to your surrender value during a period of increasing rates.</p>
<p>Income payout options</p>	<p>Fixed period: You receive payments for a fixed period of time that you select.</p> <p>Life or life with a minimum fixed period: You receive payments for life. If you select a minimum fixed period of time and pass away before the end of the period, the remaining payments are paid to the person you designate.</p> <p>Joint and one-half survivor: Payments are guaranteed for your life and the life of a designated joint annuitant. If you are survived by the joint annuitant, he or she will receive 50% of the payment for life.</p>
<p>Included waiver riders</p>	<p>Extended care waiver rider: After the first contract year, if you are confined to a nursing home or long-term care facility for at least 90 consecutive days, you have the option to withdraw up to 100% of the account value without incurring an early withdrawal charge.</p> <p>Terminal illness waiver rider: After the first contract year, if you are diagnosed by a physician as having a terminal illness, you have the option to withdraw up to 100% of the account value without incurring an early withdrawal charge. A terminal illness is defined as having a prognosis of survival of 12 months or less, or a longer period as required by state law.</p> <p>Extended care and terminal illness waiver riders are not available in Massachusetts. In California, the Extended Care Waiver Rider has been replaced with the Waiver of Early Withdrawal Charges for Facility Care or Home Care or Community-Based Services Rider, which provides for a waiver of early withdrawal charges under an expanded variety of circumstances.</p>



Great American Life Insurance Company is not an investment adviser and the information provided in this document is not investment advice. You should consult your investment professional for advice based on your personal circumstances and financial situation.

Please note, this is a general description of the product. Please read your contract, including the endorsements and riders, for definitions and complete terms and conditions, as this is a summary of the annuity's features. For use with contract form P1138919NW, endorsement form E6053516NW, and rider forms R6032310NW and R6032410NW (not available in Massachusetts). Contract and rider form numbers may vary by state. Products and features may vary by state, and may not be available in all states. See specific product disclosure document for details.

All guarantees based on the claims-paying ability of Great American Life.

Products issued by Great American Life Insurance Company® (Cincinnati, Ohio), a wholly owned subsidiary of MassMutual. © 2021 Great American Life Insurance Company. All rights reserved.

Great American® appearing with the Great American Logo is a registered trademark of Great American Insurance Company and is used under license.

Not FDIC or NCUSIF Insured	No Bank or Credit Union Guarantee	May Lose Value	Not Insured by any Federal Government Agency	Not a Deposit
----------------------------	-----------------------------------	----------------	--	---------------